



SPORTSMAN'S COVE LODGE
GUEST WELCOME GUIDE

SPORTSMAN'S COVE LODGE
GUEST WELCOME GUIDE

Guide Sections
Your Guide to the Lodge.....3
Pre-Booking Inquiry.....3
 Why Us?.....3
 Accommodations.....3
 Inclusions & Exclusions4
 Fishing Techniques, Upgrades & Captains4
 Rewards Programs & Discounts5
Post-Booking Reminders6
 Let's Start Planning!6
 Travel Advisory Contact6
 Commercial Flights.....6
 Private Flights.....7
 Preferred Hotel Options7
 Travel Insurance.....8
 Payments Schedule8
 Fishing License9
Pre-Trip Checklist.....9
 Packing List9
 Pre-Trip Final Checklist.....10
Trip Details.....11
 Arrival & Check-in.....11
 Airport Map12
 Stay Itinerary12
 Amenities & Activities13
 Fish Processing Primer14
Departure Guide15
 Customary Gratuities.....16
Lodge & Ketchikan Map18
Points of Contact20

SPORTSMAN'S COVE LODGE

GUEST WELCOME GUIDE

Your Guide to the Lodge

We are pleased that you have chosen Sportsman's Cove Lodge for your Alaskan sportfishing adventure, and it is our pleasure to host you. Welcome to where remote meets premier and all you need to do is reel and relax. This welcome guide is to serve as your captain through the choppy waters of travel and vacation logistics, to ensure your experience with Sportsman's Cove Lodge is seamless from booking to departure. If you feel this guest welcome guide has any engine issues or needs new bait, please let a member of our guest services team know. Continuous and expeditious improvement, in addition to curating world class experiential hospitality experiences, is what made Sportsman's Cove Lodge the premier destination for saltwater fishing adventures in SE Alaska over the last three decades.

Pre-Booking Inquiry

Why Us?

Sportsman's Cove Lodge operates saltwater SE Alaskan fishing trips on the east side of the Prince of Wales Island, Alaska, which is approximately 40-miles west of Ketchikan, Alaska – the salmon capital of the world. The lodge accommodates up to 30-guests from June 15th-August 30th, boasting high touch hospitality and a 1:1 guest-to-staff ratio. Our custom 37' fiberglass boats fish up to 6 anglers with a captain and deckhand, providing an elevated and supported fishing experience with a 3:1 guest to crew ratio. No need for a rental car here, as the lodge is located off the grid and was originally a saltery! We are not connected to any municipal infrastructure. However, the lodge has many modern amenities – high-speed internet, en suite bathrooms, and more. The fleet is the lifeblood of our operation and our captains are experienced at putting anglers from beginner to expert on fish – no experience necessary. Fishing the inside passage on our comfy (no tin cans here), custom fleet makes for an enjoyable experience for all types. On the campside, the lodge has a full-service bar with beer taps and 100-stick cigar humidior, a fire powered hot tub, and more to elevate and balance the experience.

We chart a course toward exceptional and curated fishing experiences, ensuring every trip with us is unforgettable. We redefine the fishing lodge experience with elevated accommodations, refined vessels, world-class captains, and modern amenities—all backed by three decades of hospitality pedigree. From the dining hall to the fishing deck, we set the standard of seamless service, so you only need to lift your fork and your pole. Reel, relax, and let us steer the way—where remote meets premier.

Accommodations

The lodge accommodates up to 30-guests, offering a maximum of 10 single-occupancy and 20 double-occupancy accommodations across four distinct lodging options—each with its own character and experience.

SPORTSMAN'S COVE LODGE GUEST WELCOME GUIDE

- **The King Salmon Deckhouse** is our newest and flagship accommodation. Designed with elevated comfort in mind, it features en suite full-size bathrooms, recessed fireplaces, rustic Alaskan finishes, a wraparound deck, an executive meeting room for six, and a guest fitness room. Standard double occupancy with single upgrade options available, including two executive suites with deep soak tubs and custom tile finishes.
- **The Coveside Cabin** is our original 6-angler rustic Alaskan cabin—ideal for groups and families alike. Double occupancy standard, featuring a utilitarian 3' shower stall layout with one master en suite bath and two additional baths with hall access. Includes a living room, kitchen facilities, and private deck for a classic lodge feel.
- **The Chalet Cabin** is our newest 6-angler post-and-beam cabin, blending craftsmanship with comfort. Double occupancy standard with two full baths—one split-style for convenience—both equipped with full-size shower/tub combos. Includes a private deck and welcoming living room space.
- **The Eagle's Nest** sits perched at the top of the lodge, ideal for anglers who do not mind earning their view. Double occupancy standard with a 3' utilitarian shower and split-style en suite bath. A no-frills, functional option perfect for serious and younger anglers focused on the fishing experience.

Inclusions & Exclusions

Inclusions: Float plane excursion, lodging, meals, fishing gear, fish processing, fishing & captain/mate

Exclusions: Travel to/from and lodging in Ketchikan, Alaska, fishing licenses, bar tab, & customary gratuities

Cancellation Policy

If you must cancel, please email fish@sportsmanscovelodge.com. Cancellations over 90 days before check-in incur a fee of 50% of the trip cost; within 90 days, the fee is 100%.

Fishing Techniques, Upgrades & Captains

In our close fishing grounds, we approach fishing from a finite standpoint – hunting for trophy fish or filling fish boxes. We jig bottom for Halibut and Cod, mooch for salmon, and drift for rockfish. This tested and productive method has ensured we keep customers on fish, have an active and enjoyable fishing day, and go home with full fish boxes. **Note: we have two electric reels available upon request, first come first serve.** Captain preferences are on a first-come, first-serve basis – with priority given to full boats (6-anglers)

If you're up for a long-run or fly in upgrade to the experience, Cape Chacon due south of us is home to some of the best fishing grounds in Alaska. This lights out fishing experience is an additional \$2,000/pp per-day, due to increased logistics and strain on our hard working captains and deckhands.

SPORTSMAN'S COVE LODGE GUEST WELCOME GUIDE

Not an angler? No problem. We offer a non-angler package (based on availability) ranging from \$500–\$800 per person, per day. Due to Halibut regulations and U.S. Coast Guard capacity rules, non-anglers are not permitted aboard the fishing vessels during the standard fishing day unless booked at the full guest rate. Our dining room is designed to accommodate up to 30 guests at a time. Non-anglers are welcome to join hosted guest dinners on a space-available basis; however, in-room dining is the standard arrangement for non-angler bookings.

Corporate Retreats

Sportsman's Cove Lodge offers a unique, off-the-grid setting ideal for executive retreats, leadership summits, and client appreciation events. Removed from distraction yet equipped with modern amenities, the lodge provides a focused environment for meaningful connection and strategic planning.

Our main dining room comfortably accommodates large group gatherings, presentations, and hosted dinners. For smaller sessions and breakout discussions, guests may utilize Ford's Game Room or the King Salmon Executive Suite, which is outfitted for more intimate meetings.

Paired with guided fishing, elevated hospitality, and private lodge access, a retreat at Sportsman's Cove blends productivity with experience in a way few venues can replicate.

Rewards Programs & Discounts

Saltery Salute: At Sportsman's Cove Lodge, we proudly honor the men and women who protect our freedoms. The Saltery Salute Program is our way of showing appreciation to active-duty service members and U.S. military veterans. Eligible guests receive a 10% discount on any available dates. Simply present a valid military ID or DD214 at the time of booking, and our sales team will apply the discount.

Please note: this discount is reserved exclusively for the qualifying service member. It does not extend to additional guests in the party who are not active duty or veterans. This cannot be combined with other sales promotions or discounts.

We salute you—thank you for your service.

Saltery Select: Launching for the 2026 season, the Saltery Select Rewards program is our points-based loyalty system designed to reward your continued adventures with us. You'll earn 1 point for every dollar spent, which can be redeemed for valuable perks—ranging from complimentary gear and exclusive upgrades to whole trip credits. There's no sign-up required; we automatically enroll all qualifying guests.

Your loyalty deserves more than a thank-you. With Saltery Select Rewards, every cast brings you closer to your next unforgettable experience.

SPORTSMAN'S COVE LODGE
GUEST WELCOME GUIDE

Post-Booking Reminders

Let's Start Planning!

You've just booked your trip with Sportsman's Cove Lodge. What next? Our all-encompassing guide below holds your hand through the way. Early booking of hotels and flights (within 90-120 days of your check-in date is recommended) to maximize your price and availability.

Travel Advisory Contact

Want to skip the logistics? No problem! Our preferred and recommended travel advisory contact is Journey Travel out of Aberdeen, Washington.

Jene'e Bearden

Owner/Advisor | Journey Travel

(360) 532-2862 | jenee@journeytravel.com

Commercial Flights

Alaska Airlines is the only carrier with commercial flights from Seattle-Tacoma International Airport into Ketchikan International Airport. Guests fly into Ketchikan on their check-in date, with float plane transfers on the same day from Ketchikan to the lodge. Guests must arrive in Ketchikan, AK before 5 PM AKDT to efficiently coordinate floatplanes with SeaWind Aviation, our partner for local transportation.

For departure, guests with groups less than 6-individuals must plan on staying their check-out date in town at one of our preferred hotel partners, and fly home the day after check-out. If a full boat desires a same-day departure from Ketchikan, Alaska, it is an option but potentially may incur additional transportation costs. Due to turnover schedules, we construct our turnover in this manner to ensure all guests get a full fishing day. Please see below for select flights to book to/from Seattle.

- Select Arrival Flights (SEA>KTN)
 - AS 653 – Arrival 11:03 AM
 - AS 92 – Arrival 12:53 PM
 - AS 67 – Arrival 4:44 PM
- Select Same-Day Departure Flights (KTN>SEA)
 - AS 214 – Departs 1:47 PM
 - AS 64 – Departs 5:44 PM
 - AS 470 – Departs 7:23 PM
 - *(Must be a 6-person or more booking. May incur additional float plane costs.)*
- Select Next-Day Departure (KTN>SEA)

SPORTSMAN'S COVE LODGE GUEST WELCOME GUIDE

- AS 60 – Departs 9:02 AM
- AS 596 – Departs 11:57 AM
- AS 62 – Departs 12:46 PM

Private Flights

Early scheduling and communications help us ensure private flights are seamless. Aero Services at Ketchikan International Airport is the only, albeit exceptional, FBO at the airport. Aero has hanger space if booked in advance and can accommodate jet sizes up to a Citation 10 with their 20'x100' doors and 10,000 square-feet of hanger space. Aero has various services, such as catering, dry cleaning, dishes, sewer, fuel, coffee, and more for “wheels up” travelers. **Note: Aero cannot do potable water refill.**

To schedule an arrival with Aero Services, simply email your tail number, arrival time, departure time, and manifest to their operations manager and copy our Fish@sportsmanscovelodge.com email. **Note: the phone number listed online for Aero Services does not work.**

Recommended Arrival Time on Check-in Day: 4:40 PM

Recommended Departure Time on Check-out Day: 6:30 PM

Jessica Freeman

Office (907) 531-9892 | Cell (907) 617-7141 Jessica.Freeman@atlanticaviation.com

Operations Manager | Aero Services

Preferred Hotel Options

The Cape Fox Lodge is a class-a boutique Alaskan retreat overlooking downtown Ketchikan, blending refined comfort with deep cultural roots and sweeping views of the Tongass National Forest and Tongass Narrows. Blending rustic Alaskan character with elevated and executive comfort, it's an ideal base for business travelers, groups and executives. Guests enjoy elevated, locally inspired dining at the Heen Kahidi Dining Room and casual Italian fare with cocktails at the Eagle's Nest, making it an ideal base for both relaxation and Southeast Alaska adventure.

Mention that you're traveling to/from Sportsman's Cove Lodge and the reservations team will discount your stay with our preferred rate

Cape Fox Lodge

(907) 225-8001 | Info@CapeFoxLodge.com

[Cape Fox Lodge – Alaska Luxury Boutique Lodge Accommodations](#)

SPORTSMAN'S COVE LODGE GUEST WELCOME GUIDE

The Landing Hotel is a class-b convenient waterfront gateway, perfectly situated just minutes from the airport and ferry terminals with sweeping views of Tongass Narrows. Blending classic Alaskan character with modern comfort, it's an ideal base for adventurers, business travelers, and anglers alike. Guests can dine on hearty all-day favorites and nostalgic classics at The Diner Restaurant, or enjoy elevated comfort food, fresh Alaskan seafood, local brews, and cocktails in the cozy Portside Pub & Grill—making every stay as delicious as it is convenient.

Mention that you're traveling to/from Sportsman's Cove Lodge and the reservations team will discount your stay with our preferred rate

Mylene Nedzwecky

(907) 225-5166 | Reservations@landinghotel.com

[Waterfront Hotel in Ketchikan, Alaska | The Landing Hotel](#)

Travel Insurance

Travel to remote Alaska is an unforgettable experience—but it also comes with variables outside anyone's control, including weather delays, flight disruptions, and unexpected medical or travel issues. For that reason, we strongly recommend all guests purchase comprehensive travel insurance to protect their investment and ensure peace of mind from departure to return.

A quality travel insurance policy can cover trip cancellations or interruptions, emergency medical care, evacuation, baggage delays, and missed connections—particularly important when traveling to Southeast Alaska. While we do everything possible to support our guests, travel insurance is the best way to safeguard against circumstances beyond our control and ensure your trip remains stress-free, no matter what Alaska has in store.

Travel insurance can be secured through Journey Travel noted above in the travel advisory section or digitally through [Faye - Whole-Trip Travel Insurance](#).

Payments Schedule

Unless otherwise customized and approved in writing, our standard payment schedule is as follows: for the 2026 season, one-third of the trip cost is due at the time of booking, one-third is due 30 days after booking, and the final one-third is due 60 days after booking. All reservations must be paid in full before your check-in date. For 2027 sales made between now and September 1, 2026, one-third is due at the time of booking, with the remaining payments due on September 1st, 2026 and October 1st, 2026, respectively. Payments may be made by credit card, check, or wire. Credit card payments incur a non-refundable 3% convenience fee.

SPORTSMAN'S COVE LODGE

GUEST WELCOME GUIDE

Fishing License

Before you depart for your trip with Sportsman's Cove Lodge, you must purchase your Alaska fishing license from the department of fish and game, and a king salmon stamp if applicable. 3-day licenses and stamps are \$30-per, 7-day licenses and stamps are \$45-per, and an annual license and stamp is \$100-per. If you're coming on a 3-day fishing trip, you'll need to purchase a 3-day stamp/license. If you're coming on a 4-day fishing trip, you'll need to purchase a 7-day stamp/license.

Follow the following procedure or watch the video linked below for a straightforward walkthrough on purchasing your licenses and stamps.

1. Go to Alaska Fish & Game Website [Home Page, Alaska Department of Fish and Game](#)
 - a. Hover over the fishing tab and licenses and permits, and select "buy-now"
2. Select shop as guest or sign-in
 - a. Fill out your name, DOB, DLN, and other pertinent information
3. Select fishing, hunting, trapping licenses and stamps in the upper lefthand corner
 - a. Select the license/stamp type dropdown and make your selection
 - b. Check the emergency orders before purchasing a king salmon stamp. ***King Salmon is heavily regulated and subject to closures.***
 - c. Select the start date and set it to the day **after** your check-in date and set the time to 5 AM or earlier
 - d. Click checkout under the "your cart" section, blue icon and proceed to checkout
4. Print your fishing license and save down to your email or cell phone. A printed copy is required, as various species require notations directly on the license. Our office staff is happy to print your copy if required at check-in

Video Link:

https://drive.google.com/drive/folders/1xdI2RHHXGUBY4HdHRVjeSrth_6f0Ntpv?usp=sharing

Pre-Trip Checklist

Packing List

Recommended Packing List

- Driver's license (*must be REAL ID as of 2025 season*)
- Fingerless/fishing wool or waterproof gloves (*for overly wet or windy days*)
- Sunglasses (*for when we get beautiful weather*)
- Sunscreen (*for when we get beautiful weather*)
- Lip balm with SPF (*for when we get beautiful weather*)
- Dramamine (*if you get motion sickness*)

SPORTSMAN'S COVE LODGE GUEST WELCOME GUIDE

- Baseball cap and/or beanie (*to block out the sun or wind*)
- Medicine & medical devices (*complimentary vitamin c and Advil is available on site*)
- Fleece/pullover (*for overly wet or windy days*)
- Base, insulation, and outer shell layers (*for fishing*)
- 2-3 outfits of casual or business casual (*whatever you feel comfortable in – complimentary laundry facilities are available for guest use*)
- Boot inserts/gel insoles (*for boots provided and overall comfort*)
- Cash (*for miscellaneous expenses in town and customary gratuities*)
- Personal hygiene items & toiletries
- Batteries & chargers
- Note: guests must be mindful of weight for float plane transfer. Guests are recommended to pack a 40/lbs carry on and personal item. The lodge has complimentary laundry facilities on site.**

Optional Packing Recommendations

- Waterproof phone case or pouch (*days can be wet*)
- Neck gaiter (*days can be windy*)
- Hand warmers (*days can be cold*)
- Wool or thermal socks (*days can be cold*)
- Hiking boots (*if you'd like to explore our trails*)
- Swimsuit for hot tub (*if you plan on utilizing*)
- Gym clothing for fitness center (*if you plan on working out*)
- Tempur-Pedic neck pillow (*if you utilize one*)
- Specialty hair conditioners & shampoos (*if you have preferred soaps*)
- Download movies/tv shows (*Wi-Fi speeds can be slow with inclement weather*)
- Individual binoculars (*wildlife viewing*)

Guest Inclusions | Amenities on-site

- Fishing boots, bibs, & jackets (*sizes range small-3XL, 6-15 boot size*)
- Rods, reels, bait, etc
- Washers & dryers for your use
- Individually wrapped room water cups
- Boot heater upon request
- Extra blankets
- Hair dryers
- Iron + ironing board
- Wood hangers
- Customary linens & pillows
- Shampoo, conditioner, body wash, & bar soap
- Boat Bluetooth speakers
- Sleep masks

Pre-Trip Final Checklist

- Have you booked your flight?
- Have you booked your hotel?
- Have you secured travel insurance?

SPORTSMAN'S COVE LODGE GUEST WELCOME GUIDE

- Have you review the packing list?
- Have you purchase your 3-or-7-day fishing license?
- Have you checked emergency orders for King Salmon Stamps?
- Do you have your drivers license? Is it a REAL ID (*required as of 2025*)?
- Has a member of our guest services team reached out to you for your fishing bib, jacket, boot sizes, and flight information?

Trip Details

Arrival & Check-in

Arriving in Ketchikan Before 4 PM

Upon arrival in Ketchikan, Alaska on check-in day, you'll be boarding the airport ferry to the Ketchikan side. For these early flights, guests can explore town, shop, or even go on day excursions! Our transportation partner SeaWind Aviation has complimentary vans to pick you up from the ferry terminal on the Ketchikan side. From there, SeaWind will take you to their oceanfront HQ for check-in and weighing baggage. Guests need to be at SeaWind Aviation no later than 3:30 PM, for their float plane excursion

Arriving in Ketchikan After 4 PM

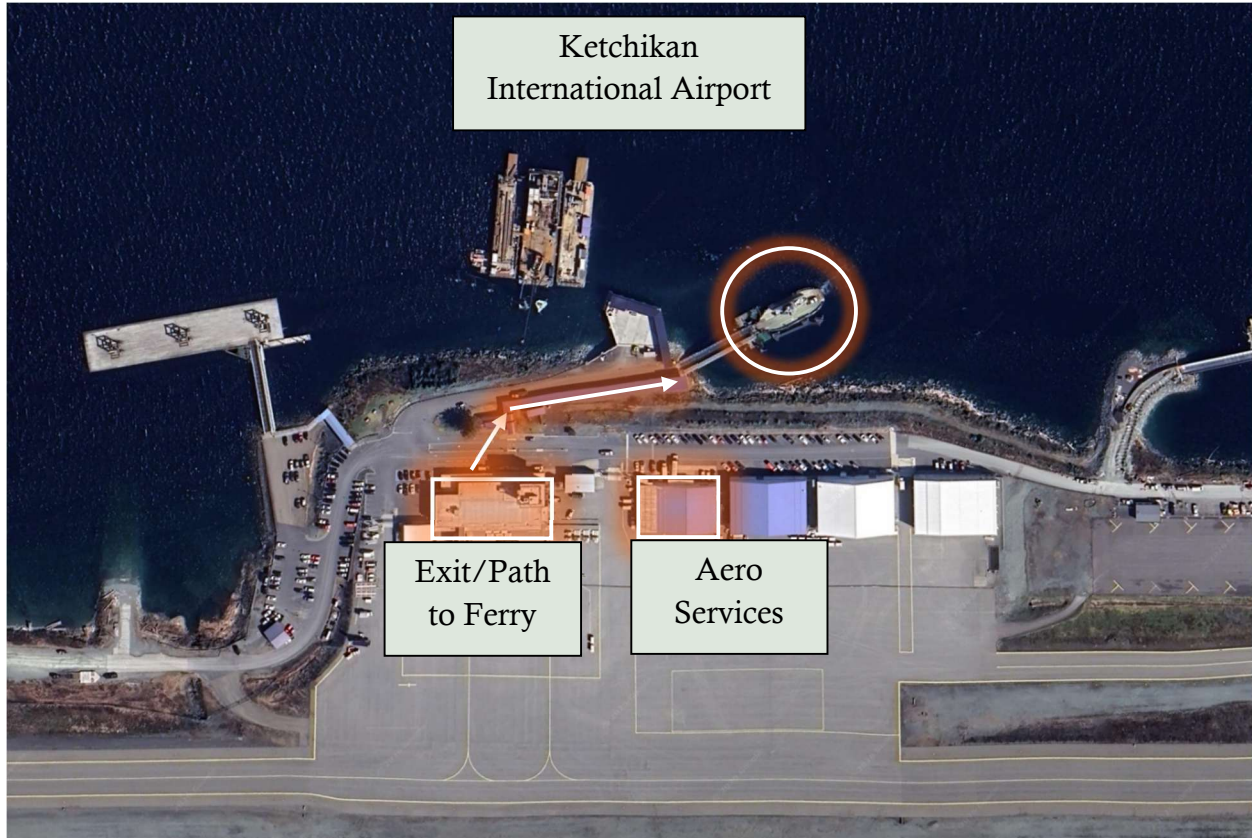
Upon arrival in KTN, you'll be greeted by a member of SeaWind Aviation's hospitality staff and guided down to the docks on the airport side. The float planes will come over from the Ketchikan side and seamlessly take you directly to the lodge.

Airport Ferry

The airport ferry is located on the east side of the airport on the water side, exiting the terminal. The ferry operates 6:15 AM-9:30 PM, and leaves the airport side every hour and half-hour, and leaves the Ketchikan side on the quarter hours. Plan on \$5 per-use.

SPORTSMAN'S COVE LODGE GUEST WELCOME GUIDE

Airport Map



Check-In

Upon arrival at the lodge, you'll be greeted by our hospitality staff and fleet team. From there, our deckhands will assist in transporting your luggage from the dock to your rooms. Check-in is conducted in the lounge/dining room, and accompanied by a cocktail hour to get the trip started. This cocktail hour is an incredible opportunity to decompress from your travels and meet your co-anglers for the trip.

Stay Itinerary

5:30 AM – Prepare lunch at our legendary spike table and enjoy coffee bar

6:00 AM – Fisherman's buffet breakfast; fuel up for the day

6:30 AM – Depart to the fishing grounds and enjoy Alaska scenery

7:00 AM – Start the fishing day, generally bottom jigging for halibut and cod

12:00 PM – Lunch on the water: sandwiches, snacks, or a grilled cheese

12:15 PM – Get back to it. A dry line doesn't catch fish—start salmon fishing

SPORTSMAN'S COVE LODGE GUEST WELCOME GUIDE

3:30 PM – Head back to the lodge for fish photos and a scenic, fulfilling boat ride

4:00 PM – Fish photos and fish filleting begins. Shower up, grab a drink at the bar, and shoot some pool – *flex time*

6:00 PM – Dinner and Big Fish of the Day awards. Enjoy photos from the day and a hearty plated dinner

8:00 PM – Grab your favorite bourbon and cigar from the bar and enjoy your evening in Alaska – *flex time*

Reel, relax, repeat — where remote meets premier

Note: Shore lunch upgrade is available as culinary add-on

Amenities & Activities

- Complimentary Amenities and Activities
 - Fire Powered Hot Tub (can be reserved at check-in otherwise first-come, first-serve)
 - Game Room with Pool Table and Poker Sets (first-come, first-serve)
 - Fitness Facility with Treadmill, Free Weights, and Dip Rack
 - Executive Lounge (can be reserved at check-in otherwise first-come, first-serve)
 - Skeet Shooting Activity
 - Kayak Rental
 - Guided Hike
 - Off-the-Dock Fishing
 - Shrimping & Crabbing (*must be full boat*)
- Paid Amenities and Activities
 - Full-Service Bar with Beer on Tap and 100-Stick Cigar Humidor (*prices vary*)
 - Skiff Rental (*\$100/per-hour*)
 - Shore Lunch (*anticipated summer 2026*) (*\$100/per-person*)
 - Shop for SCL gear in our Outfitter Corner (*prices vary*)
 - Wildlife Viewing Tour (*prices TBD*)
 - Kassan Totem Pole Tour (*prices TBD*)
 - *Note: all activities have 1-hour minimum*
- Standard Room Amenities
 - Hair Dryer
 - Iron + Ironing Board
 - Wood Hangers
 - Cups/Water Bottles
 - Customary Soaps and Hair Conditioner
 - Customary Linens & pillows
 - Sleep Masks
 - Shoe Horn
 - Coffee (*Lounge, Common Area*)

SPORTSMAN’S COVE LODGE
GUEST WELCOME GUIDE

- Workspace & High-Speed Internet *weather dependent (Lounge, Common Area)*
- Washer/Dryer (*in/near building*)
- Boot Warmer (*available upon request*)

Fish Processing Primer

Our team will filet your catch and the standard is 16oz steak filet packages. If you have a preferred filet size, let us know. Your catch is fileted, cleaned, vacuum sealed, and flash frozen by us. At departure, we will coordinate your boxes to the Ketchikan International Airport for transportation on your departure day. On departure day, a member of SeaWind aviation’s guest services team will pull your fish from our freezers and meet you at bag check for transport back home.

Fish shipping is available through one of our preferred third-party vendors; however, we generally discourage this option due to the number of complications we’ve seen over the years with fish box transit. While we are happy to provide a point of contact for the vendor, the lodge does not manage or oversee the fish shipping process.

Typical Yields

- Halibut: 40–50% yield from round weight to fillet
- Salmon: 50–60% yield, depending on species
- Cod: 30–40% yield

Alaska Department of Fish & Game: Slot Limits 2C

Species	Daily/Bag Limit	Annual Limit	Slot Limit
King Salmon	1	1	>=28”
Silver Salmon	6		>=16”
Pink Salmon	6		>=16”
Chum Salmon	6		>=16”
Pacific Halibut	1		<34” or >80”
True/Pacific Cod	Unlimited	Unlimited	NA
Lingcod	1	2, 1 in each limit	30-35” or >55”
Black Bass Rockfish	3		NA
Yelloweye Rockfish	1	1	NA
<i>Pacific Halibut is subject to closure days – Thursdays for 2026 season</i>			

On-Site Booking Discount (early reservations advised)

As a thank you to our loyal guests, we offer a 10% on-site booking discount. Reservations must be confirmed and deposits made on site to capitalize on the on-site booking discount. Early reservations are advised – our prime stay window generally is full by 9/1.

SPORTSMAN'S COVE LODGE GUEST WELCOME GUIDE

Upgrade Options – Smoked Salmon, Cape Chacon, & GAF Program

Our lodge can smoke your salmon and offers smoked salmon for sale at \$12/per-pound. We have lemon pepper, Cajun, or original or as flavor options.

Cape Chacon is located at the south side of the Prince of Wales Island and home to some of the best saltwater fishing in the state of Alaska. Chacon trips require coordination, logistics, additional cost, and are harder on the crew mates. Chacon trips are available, weather dependent, at an additional \$2,000/per person.

The lodge GAF program allows for harvesting pacific halibut that is either not in the slot limit, harvesting on a closure day, or both. Our GAF tags are \$565 for the 2026 season. While GAF tags are not required to be pre-purchased, please indicate to a member of our management staff if you desire one.

Culinary Offerings

The lodge prides itself on a robust culinary offering and catering to any allergies. Our executive chef is experienced in curating thoughtful and allergy conscious meals – in addition to hearty Alaskan favorites. Each day, breakfast is a fisherman's buffet with a wide range of options. Lunches are our legendary “spike table” sandwich bar, where guests can tailor their on the water meal to their exact preference. Dinners are plated, 4-course meals with plentiful portions, thoughtful presentation, and delicious Alaska comfort food – all prepared in our scratch kitchen. The proposed yet subject to change menu can be found on our website or by emailing us at Fish@sportsmanscovelodge.com.

Departure Guide

Check-Out and Turnover

The night before or early morning of your check-out date, you must pack your belongings for transportation to the dock and check-out with our team in the dining room. Our staff will ensure all your belongings are safely transported to the dock. Simply leave your luggage outside your door before departing on the final fishing day. If you desire to shower before transport to town, we provide bags for a change of clothes and toiletries for keeping items aside. On turnover/check-out days, the boats will return approximately 1-hour early (weather dependent) for fish photos on the dock, final cocktails at the Saloon, and float plane transfer to town.

Over the past three decades, the lodge has built its reputation on delivering exceptional experiences and addressing guest feedback promptly and professionally—no matter how big or small the concern. To help us continually refine the experience, our “Guest Fishing Report” feedback form is placed in your room and aboard your fishing boat the day before

SPORTSMAN'S COVE LODGE GUEST WELCOME GUIDE

and day of checkout. We greatly appreciate you completing the form and returning it to a member of our guest services team. Guests who share their experience on Google are entered into our annual raffle for a complimentary fishing trip. To qualify, please post a 5-star review and include photos from your stay.

Customary Gratuities

At Sportsman's Cove Lodge, gratuities are never assumed — they are earned. Our team is trained to deliver high-touch, professional hospitality both on the water and at the lodge, and any gratuity is a reflection of your satisfaction with that experience.

Fleet Gratuities: To tip your captain and deckhand, gratuities for the fishing fleet may be given directly to them at the conclusion of your trip.

Shoreside Gratuities: Gratuities for lodging staff (*culinary, service, and housekeeping teams*) may be conveniently settled at checkout.

Rate	Fleet	Shoreside	Total
20%	\$660	\$440	\$1,100
15%	\$495	\$330	\$825
10%	\$330	\$220	\$550

Boat Transfers

Occasionally with weather delays or float plane flight cancellations, a boat transfer to town will be required. Generally, the lodge will determine if a boat transfer is necessary by 12 PM and inform the captains and crew. Boat transfers take approximately 2-hours, more with inclement weather, and unfortunately boat transfers require returning from fishing 2-3 hours earlier than the standard fishing time.

Ride Sharing

There is no Uber in Ketchikan and the preferred methodology of transportation is via SeaWind's shuttles, individual hotel shuttles, or SourDough Cab service.

Restaurant Recommendations

- The Alaskan Fish House – Fresh seafood in a casual setting
- Bush Pilots Lounge – A favorite among locals
- Heen Kahidi Dining Room at Cape Fox Lodge – Elevated dining with a view

SPORTSMAN'S COVE LODGE
GUEST WELCOME GUIDE

- Oceanview – Hearty Mexican and Italian food

Excursion Recommendations

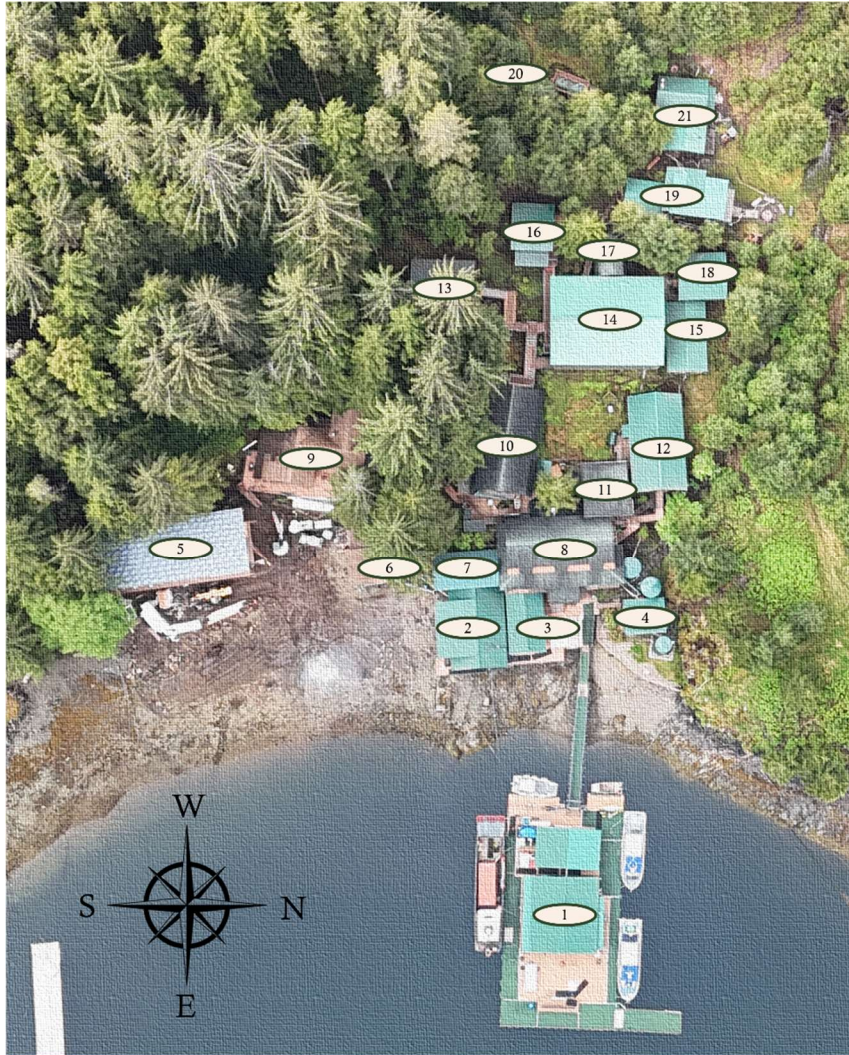
- Explore the Totem Heritage Center for a deep dive into native culture and history.
- Wander through historic Creek Street on a self-guided tour.
- Connect with Kawanti Adventures for curated local excursions.



SPORTSMAN'S COVE LODGE

GUEST WELCOME GUIDE

Lodge & Ketchikan Map

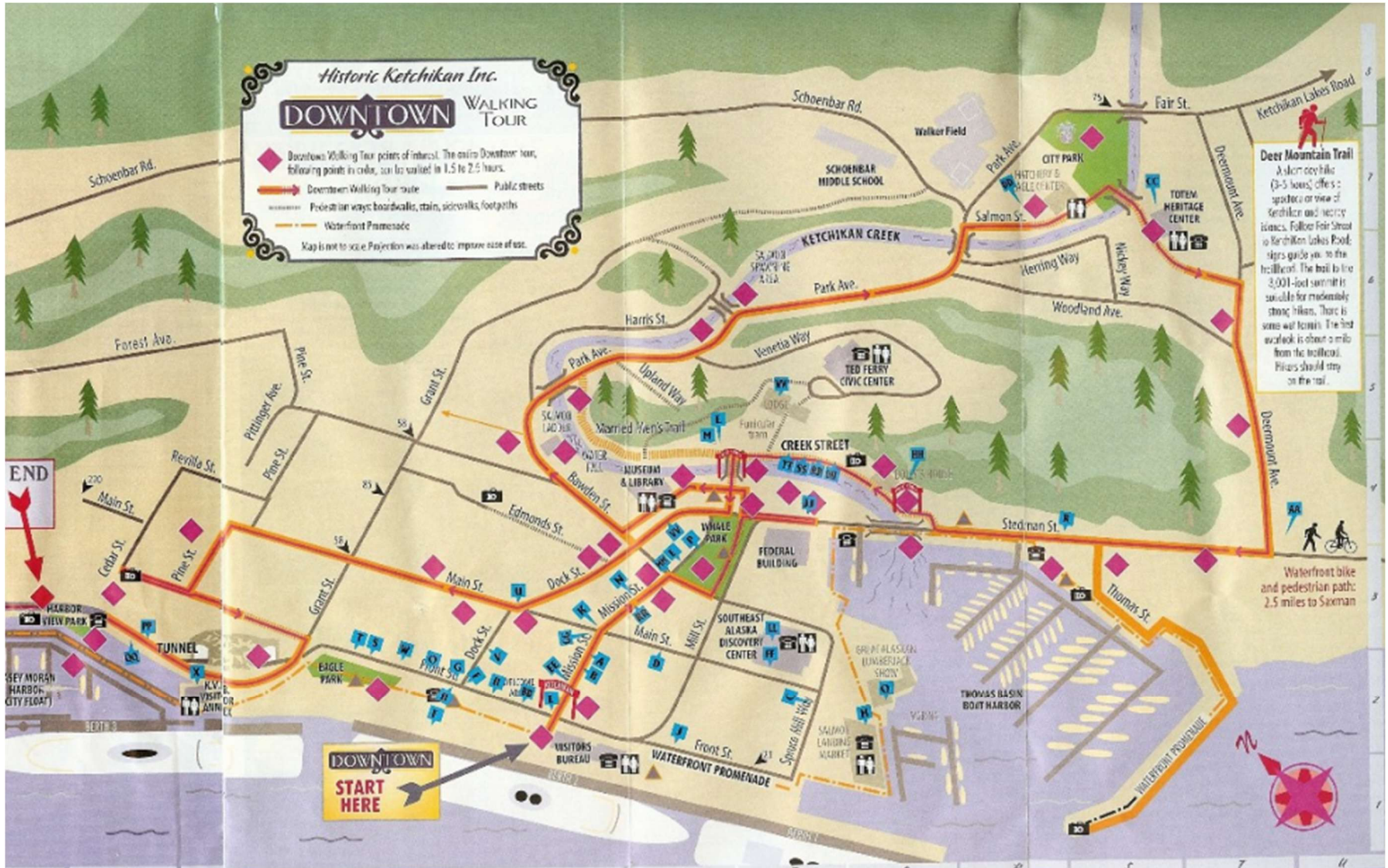


SPORTSMAN'S COVE LODGE

1. Dock
2. Owners Quarters
3. Saltery Saloon Bar
4. Engineers Shed – Staff Only
5. King Salmon Deckhouse
6. Gen Shed – Staff Only
7. Fords Game Room
8. Dining Hall
9. Coveside Cabin
10. Treehouse – Staff Only
11. Office
12. Chalet Cabin
13. Bunkhouse – Staff Only
14. Eagle's Nest
15. Married Quarters – Staff Only
16. Condo – Staff Only
17. Townhouse – Staff Only
18. Bear's Lair – Staff Only
19. Commons – Staff Only
20. Trailhead
21. Gen Sheds – Staff Only

907-931-9930 | Fish@SportsmansCoveLodge.com | SportsmansCoveLodge.com

SPORTSMAN'S COVE LODGE GUEST WELCOME GUIDE



SPORTSMAN'S COVE LODGE
GUEST WELCOME GUIDE

Points of Contact

Clifford Smith – General Manager

(570) 575-2602 | Clifford@sportsmanscovelodge.com

Joab Rolfe – Managing Partner

(719) 244-7783 | Joab.Rolfe@ogcos.com

Conor DuBoyce – Director of Operations

(920) 460-3199 | Operations@sportsmanscovelodge.com

SCL Guest Services

(907) 931-9930 | Fish@sportsmanscovelodge.com

SCL Accounting

(907) 931-9930 | Bookkeeper@sportsmanscovelodge.com

SeaWind Aviation

(907) 225-1206 | Info@seawindaviation.com

Aero Services

(907) 531-9892 | Jessica.Freeman@atlanticaviation.com

Cape Fox Lodge

(907) 225-8001 | Info@CapeFoxLodge.com

The Landing Hotel

(907) 225-5166 | Reservations@landinghotel.com